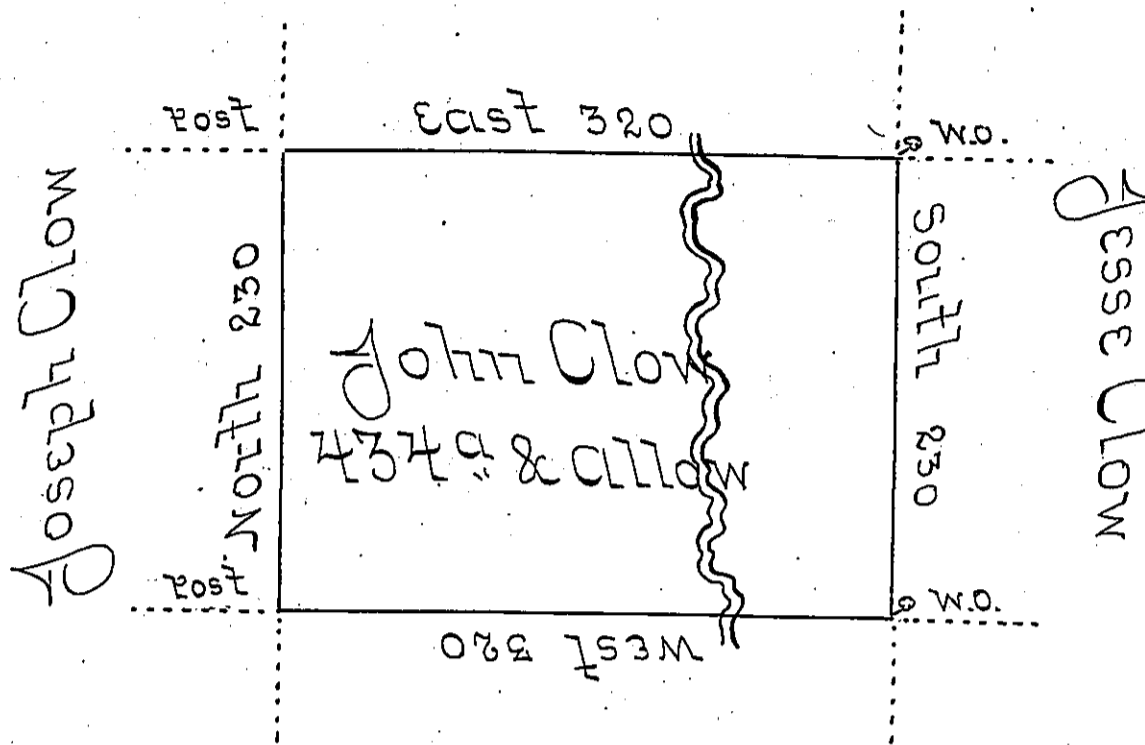


Moses Clow



Job Clow

Situate in District No 7 North & West of Ohio & Allegheny Rivers & Conewango Creek in Allegheny County containing four hundred & thirty four acres & allow^{ce} of six Percent for Roads &c^a Surveyed 12th September 1794 to John Clow on Warrant of 12th August 1793

Alexander M. Dowell D.S.

Daniel Brodhead Esq^r
Surveyor General

IN TESTIMONY that the above is a copy of the original remaining on file in the Department of Internal Affairs of Pennsylvania, made conformably to an Act of Assembly approved the 16th day of February, 1833, I have hereunto set my Hand and caused the Seal of said Department to be affixed at Harrisburg, this twenty fourth day of May 1904.

George P. Downer
Secretary of Internal Affairs.